

Smart SCADA

SCADA System

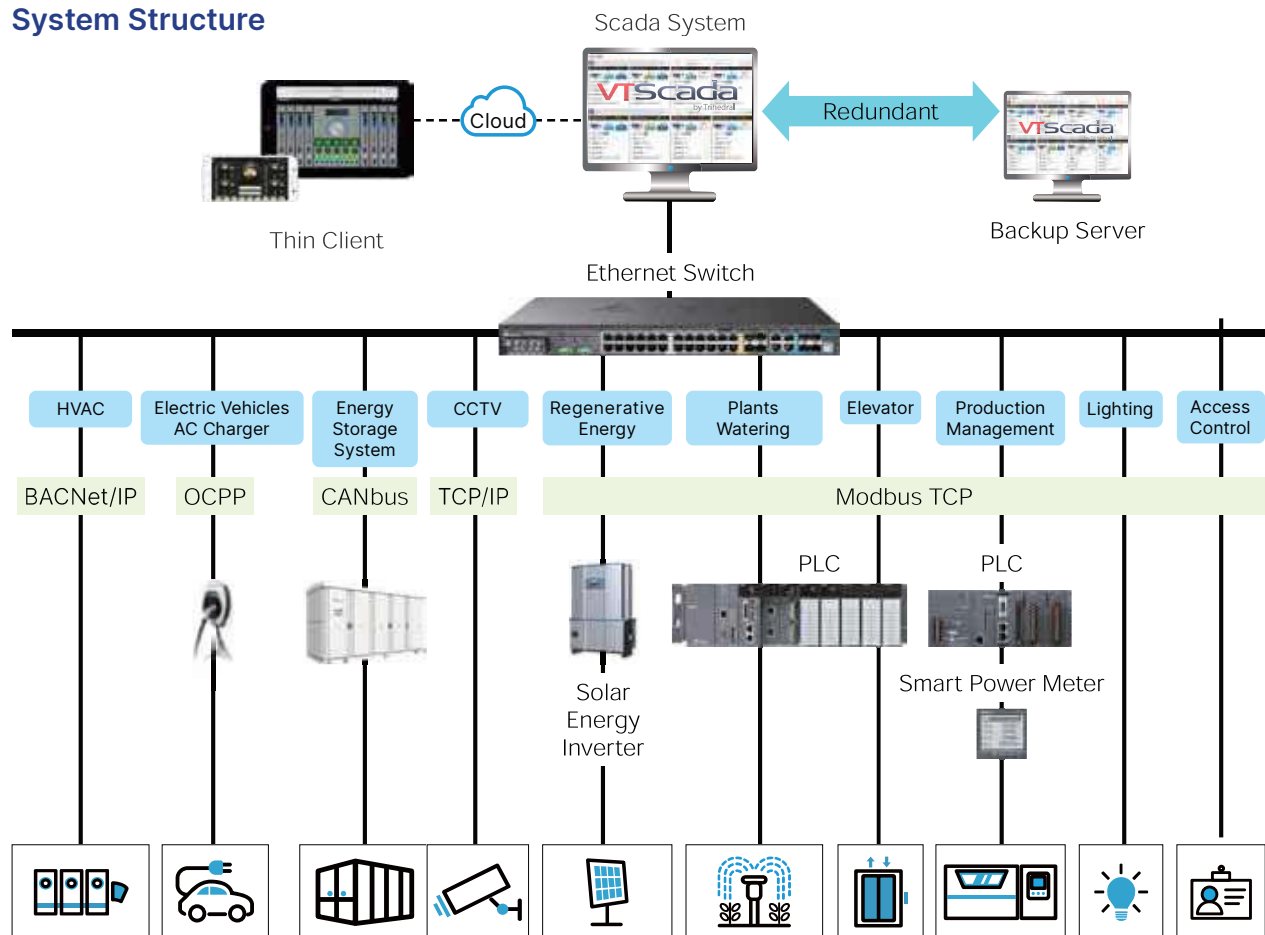
VTScada

Remote Real-time Monitoring for Factories

- Integrated architecture with one-time installation
- Diverse Driver Library with 100+ industry standard and proprietary protocols
- Built-in Historian database, no extra cost or configuration
- Achieves IEC-62443-4-1-ML 2 cybersecurity certification
- VTScada Thin Clients enables remote access from anywhere
- Instant-built intuitive screen with 200+ widgets, 4000+ graphics, and 3D pipes



System Structure



Applications

Water & wastewater treatment, Oil & gas, Chemicals, Electronics manufacturing, Food & beverages

SCADA System

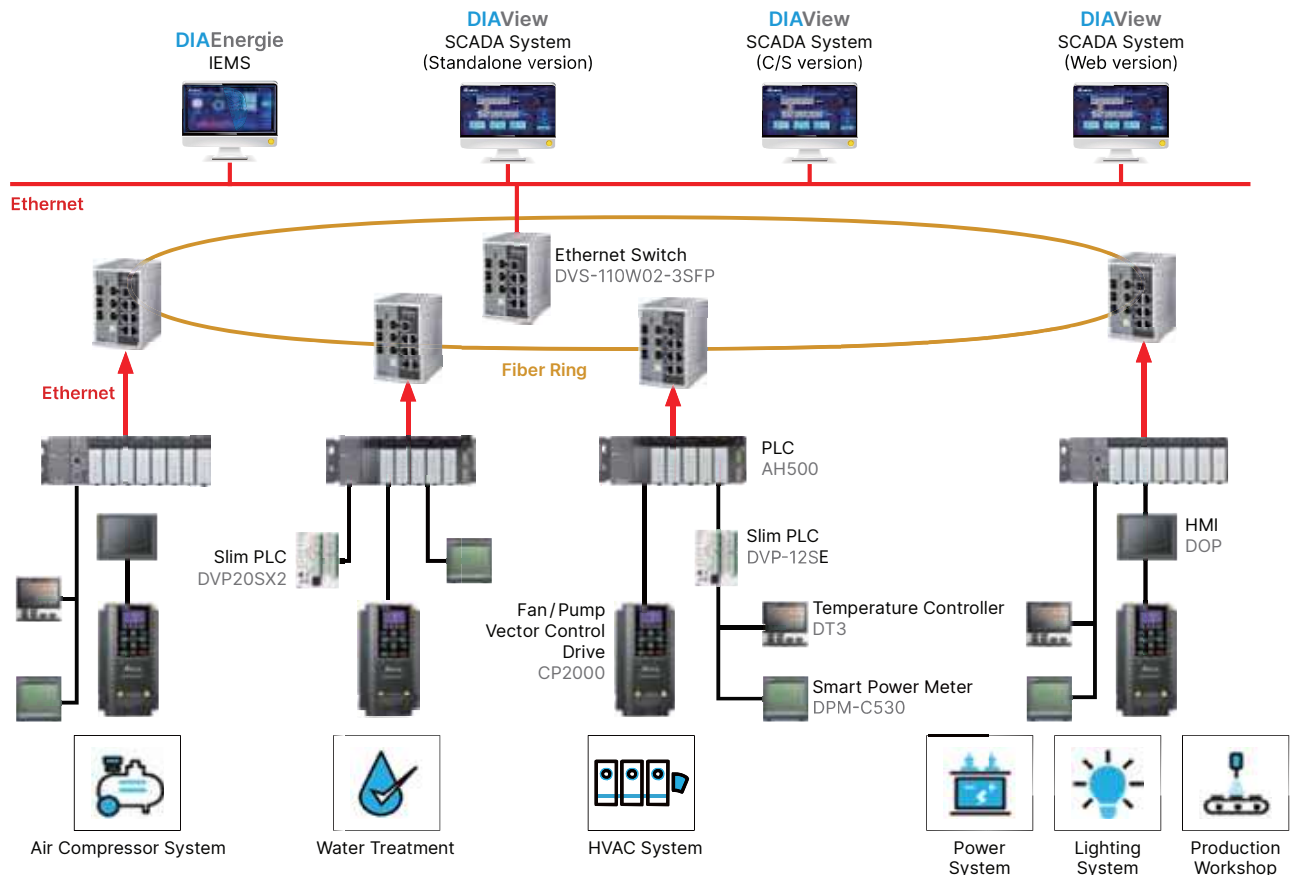
DIAView

Remote Monitoring for Smart Factory Management

- Seamless integration with Delta PLCs and I/O modules, supporting various industrial communication protocols and equipment drivers
- Web-Based CSS/HTML5 platform and WPF technology for intuitive & vivid displays and easy-to-navigate interfaces
- Variables Library and batch parameter editing for flexibility and high efficiency
- Diverse real-time data visualization: curve/pie/bar charts and reports
- Real-time and historical data analysis tools
- Efficient anomaly alarms and management
- Easy-to-learn VBScript language
- Reliable user authority management for different authorization levels



System Structure



Applications

Smart manufacturing and smart machines, HVAC, Water treatment, Electronics manufacturing

Smart SCADA

Industrial Energy Management System

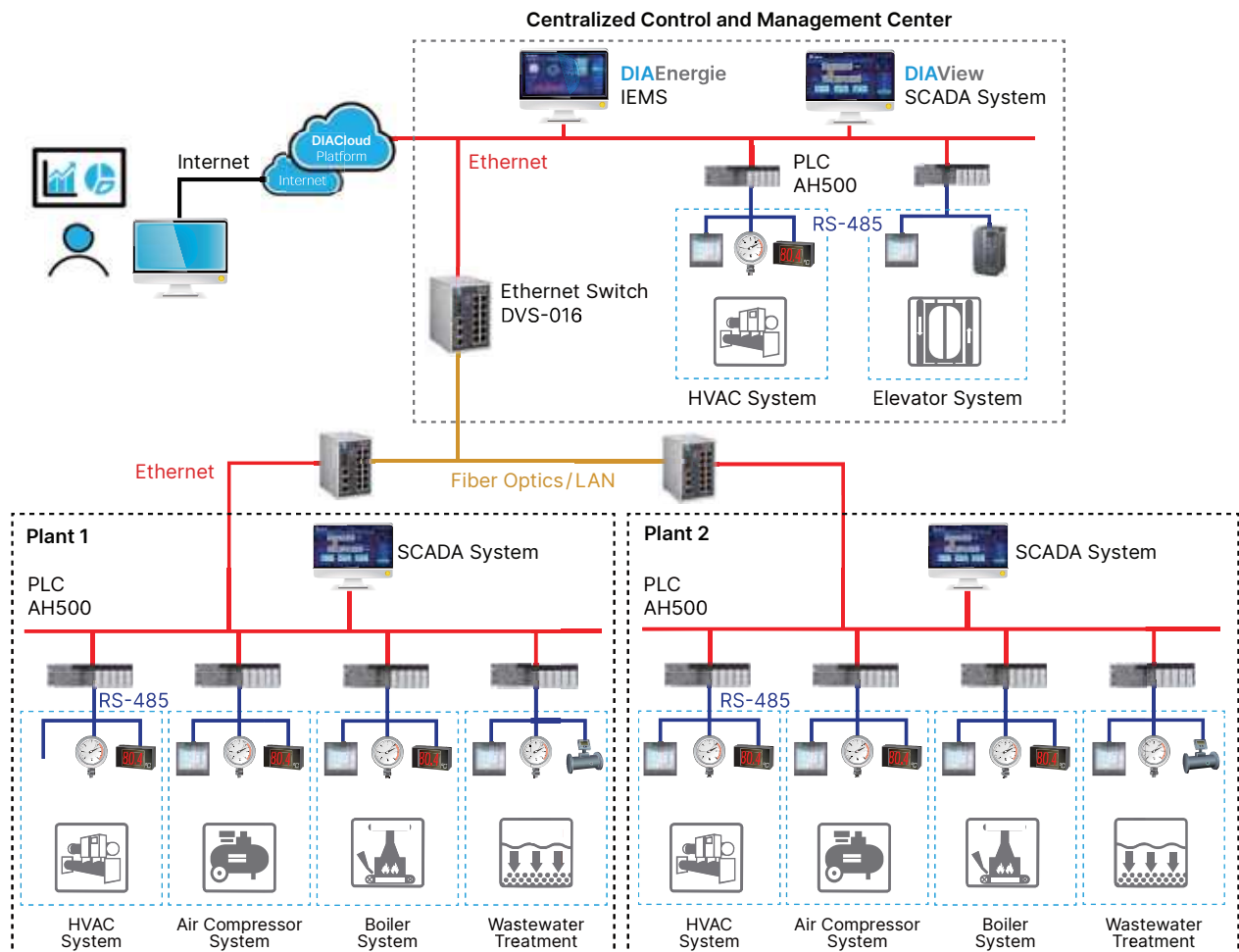
DIAEnergie

Innovative Solution for Smart Energy Saving

- Remote monitoring and visualization of critical power data
- Data analytics by areas and user authorization levels
- Monitoring and analysis for energy performance goals
- Real-time alarms for anomalies
- Power consumption analysis for efficient electricity usage and cost savings
- Demand management and forecasts to avoid exceeding the electricity consumption threshold
- User-defined tools for report output and a variety of data analyses



System Structure



Applications

Energy saving, Environment control, Power monitoring and analysis, Facility management control

Data Integration Platform New

inData⁺

inData⁺ is a one-stop platform for digital transformation. By inData⁺ central server, subsystem data is managed, allocated, and integrated

Flexible and diverse data integration

- Provides mainstream protocols for OT and IT integration (OPC DA/OPC UA/Modbus/ODBC/MQTT/Web API)

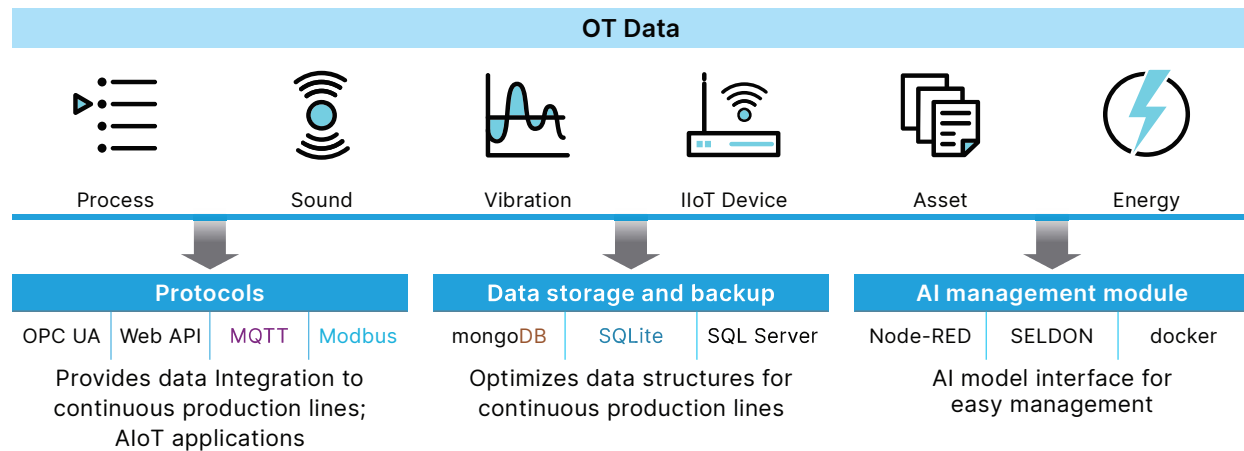


Rapid deployment and management of AI models

- Collects process information (temperature, pressure, flow) and equipment inspection data (vibration information, inspection reports)
- Provides additional features for AI model learning



System Structure



Applications

Petrochemical industry, Steel industry, and Fiber/textile industry; Other continuous production lines



Petrochemical



Steel



Fiber / Textile

Smart SCADA

Predictive Maintenance AI New PdM AI

PdM AI is a robust solution for continuous processing industries, offering three core functions: real-time monitoring with OA, health / RUL prediction, and anomaly detection

Anomaly detection and alarms

- Real-time monitoring
- Immediate alert notification
- Historical data analysis & trends
- User-configurable alert thresholds

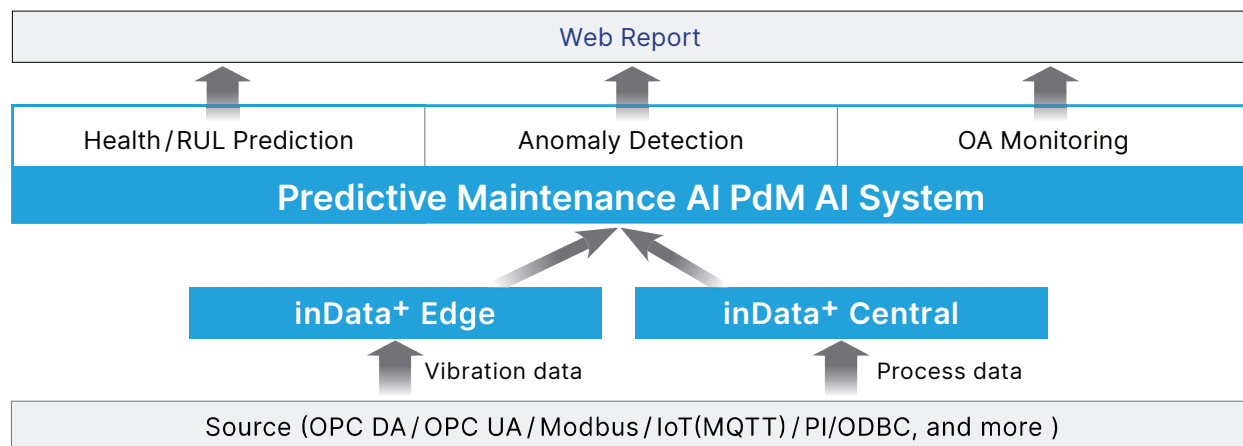


Failure root cause analysis

- Accumulation of experiences
- Cost reduction due to lower professional personnel turnover
- Effective anomaly management strategies
- Continuous improvement



System Structure



Applications

Petrochemical, Steel, Fiber / Textile industry, Other continuous production lines



Petrochemical



Steel



Fiber / Textile

Data Mining Module Miner⁺ New

Miner⁺ empowers data intelligence in process improvement, equipment inspection, production, and quality control. With a user-friendly interface and seamless integration with inData⁺, users can extract data insights from the production process

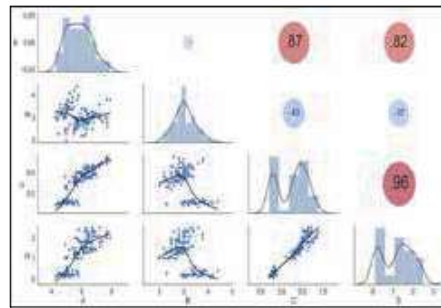
User-friendly data analysis capabilities

- Provides data intelligence for process improvement, equipment inspection, production, and quality control
- Factor analysis considers time delays in continuous production

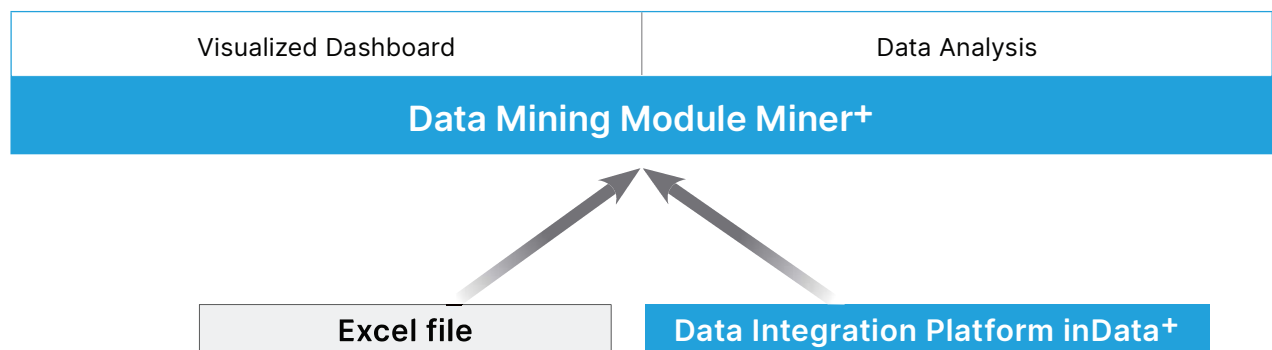


Visualized dashboard

- Enables users to integrate data sources from the inData⁺ Data Integration Platform to achieve process improvement, equipment operation tracking, and process status monitoring



System Structure



Applications

Petrochemical, Steel, Fiber / Textile industry, Other continuous production lines



Petrochemical



Steel



Fiber / Textile

Smart SCADA

Spectrum Analysis System New SPAS⁺

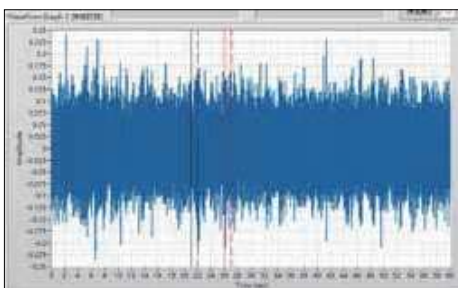
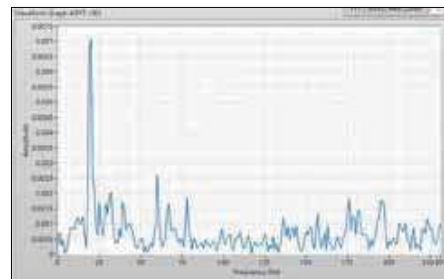
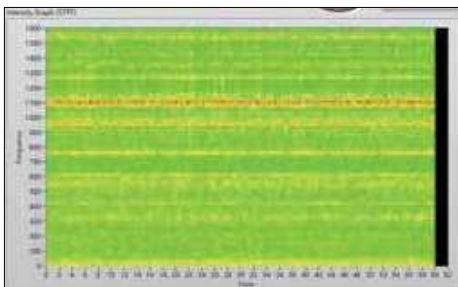
SPAS⁺ is an advanced vibration signal analysis tool designed for time-domain, frequency-domain, and time-frequency signals. It allows custom filtering, including high-pass, low-pass, and band-pass filters, for precise capturing of target frequencies. The unique defect frequency database offers automatic fault annotation, enabling users to quickly identify issues. SPAS⁺ supports database expansion to ensure the latest vibration data and effectively manages and analyzes vibration data to enhance equipment health monitoring efficiency

Integration with PdM AI system

- Real-time data synchronization
- PdM case study & insights
- Remote diagnostics and troubleshooting

Replaces traditional spectrum analysis

- User-friendly interface
- Historical data analysis and trend identification
- Customizable reporting and alarms
- Interactive data visualization & config tools



Applications

Petrochemical, Steel, Fiber / Textile industry, Other continuous production lines



Petrochemical



Steel



Fiber/Textile